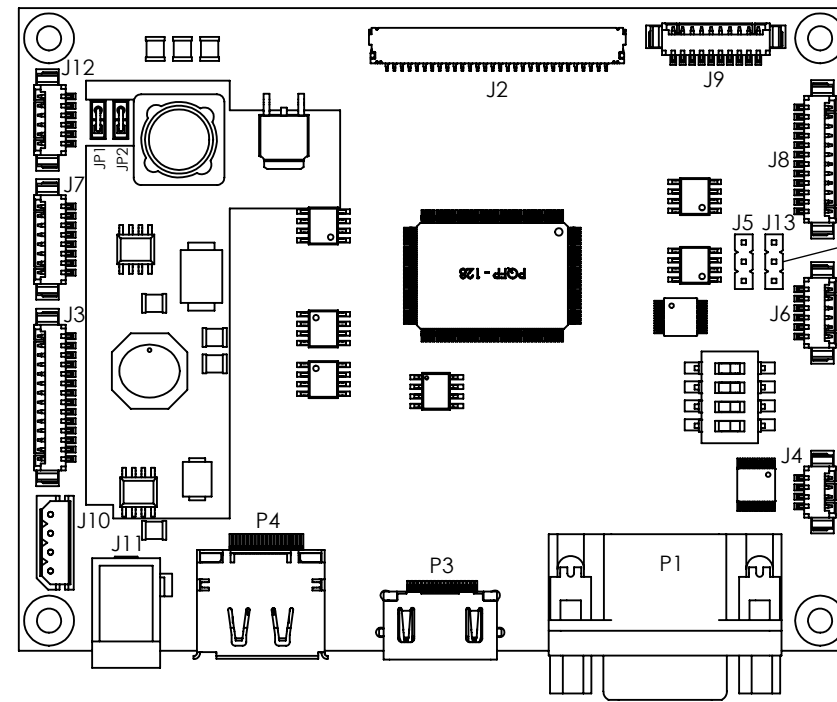


INV.	DESCRIZIONE	DATA
1	VIN6038 Revision 1	06/06/2012



BACKLIGHT DIMMING			
J5		J13	
<input type="checkbox"/>	Analog 0 ~ 3.3 V	<input type="checkbox"/>	100 --- 0 (Inverted)
<input type="checkbox"/>	Digital PWM	<input type="checkbox"/>	0 --- 100 (Normal)

LCD POWER SUPPLY		
JP1 Closed	JP2 Closed	3.3 VDC
JP1 Open	JP2 Closed	5 VDC
JP1 Open	JP2 Open	12 VDC

Ref.	Description	Connector	Mates	Cable
P1	VGA IN	D-SUB 15 pin 3 row Receptacle	D-SUB 15 pin 3 row Plug	---
P3	HDMI/DVI IN	HDMI Receptacle	HDMI Plug	---
P4	DISPLAY PORT IN	DisplayPort SMT Receptacle	DisplayPort SMT Plug	---
J2	OUTPUT TO PANEL DA TA (LVDS)	Hirose DF19G-30P-1H	Hirose DF19-30S-1C	On request *
J3	OUTPUT TO INVERTER	Molex 53261-1471	Molex 51021-1400	On request*
J4	SERIAL COM	Molex 53261-0471	Molex 51021-0400	CB-VINRS232-0
J5	BACKLIGHT DIMMING ANALOG/DIGITAL	Pin strip 2.54x3	Jumper female 2 pin 2.54 pitch	---
J6	FRONT PANEL BOARD	Molex 53261-0671	Molex 51021-0600	CB-IF131-60-0***
J7	FANS CONNECTOR	Molex 53261-0871	Molex 51021-0800	On request
J8	OSD KEY CONTROL	Molex 53261-1271	Molex 51021-1200	CB-KBALL-40-0**
J9	ANALOG AND DIGITAL I/O	Molex 53261-1071	Molex 51021-1000	On request
J10	INTERNAL DC INPUT	Molex 22-03-5045	Molex 50-37-5043	On request
J11	EXTERNAL DC INPUT	2.5 x 5.5 DC Socket	2.5 x 5.5 DC Plug	---
J12	AUXILIARY LCD PANEL POWER SUPPLY	Molex 53261-0671	Molex 51021-0600	On request
J13	BACKLIGHT DIMMING SCALE 0-100/INVERTED	Pin strip 2.54x3	Jumper female 2 pin 2.54 pitch	---

* Depending on panel model

**Standard cable CB-KBALL-40-0 is 40 cm long, on demand it is also available 30 cm, 60 cm long or custom made

***Standard cable CB-IF131-60-0 is 60 cm long, on demand it is also available custom made

This drawing and the information in it are the property of New Digimatic s.r.l. and can not reproduced, copied, modified or used in part or whole without his permission. All dimensions are read and not misurated and are in millimeters unless otherwise indicated. For more information please contact New Digimatic s.r.l..

	DATA 06/06/2012	
	DESCRIZIONE	
	VIN6038_rev1 Connections table	
	A3 P/N VIN6038-DRW06 REV. 1	
DISegnato	E. de Paula	21/02/2012
CONTROLLATO	A. Galli	06/06/2012
APPR. MECC.	E. de Paula	06/06/2012
Q.A.		
DISegNO N°		SCALA 1:1
SOSTITUISCE IL N°		UNITA': mm
SOSTITUITO DAL N°		FOGLIO 1 DI 1
		COPIA A:
		N° COPIE