

| J12 | | |
|----------------------------------|--------|---------------|
| Auxiliary LCD Panel Power Supply | | |
| Mate with | Pin n. | Function |
| Molex 51021-0600 | 1 | Aux LCD P. S. |
| | 2 | Aux LCD P. S. |
| | 3 | Aux LCD P. S. |
| | 4 | GND |
| | 5 | GND |
| | 6 | GND |

| LCD POWER SUPPLY | | |
|------------------|------------|---------|
| JP1 Closed | JP2 Closed | 3.3 VDC |
| JP1 Open | JP2 Closed | 5 VDC |
| JP1 Open | JP2 Open | 12 VDC |

| BACKLIGHT DIMMING | |
|---------------------|-------------------------|
| J5 | J13 |
| Analog 0 ~ 3.3 V | 100 --- 0 (Inverted) |
| Digital PWM | 0 --- 100 (Normal) |

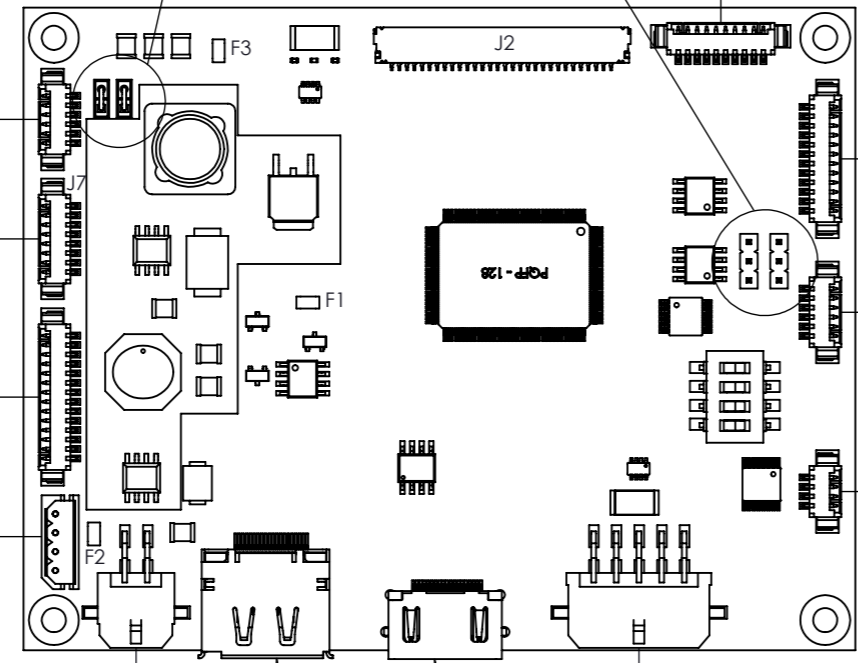
| J9 | | |
|------------------------|--------|-------------------------|
| Analog and Digital I/O | | |
| Mate with | Pin n. | Function |
| Molex 51021-1000 | 1 | NTC10K@25°C |
| | 2 | GND |
| | 3 | 3.3 VDC 300 mA MAX |
| | 4 | DRIVER TO GND 200 mA |
| | 5 | AUX I/O LVTTL |
| | 6 | I2CBUS SCL |
| | 7 | I2CBUS SDA |
| | 8 | NTC10K@25°C |
| | 9 | BPW77 COLLECTOR |
| | 10 | GND/BPW77 EMITTER |

| Fuse | Type |
|------|------------------------------------|
| F1 | Fan fuse 2A, 32 V, FAST, 1206 |
| F2 | Main fuse 5A, 32 V, FAST, 1206 |
| F3 | VCC Panel fuse 3A, 32 V, FAST, 120 |

| J7 | | |
|------------------|--------|-----------|
| Fans Connector | | |
| Mate with | Pin n. | Function |
| Molex 51021-0800 | 1 | 12-24 VDC |
| | 2 | 12-24 VDC |
| | 3 | 12-24 VDC |
| | 4 | 12-24 VDC |
| | 5 | GND |
| | 6 | GND |
| | 7 | GND |
| | 8 | GND |

| J3 | | |
|--------------------|--------|--|
| Output to Inverter | | |
| Mate with | Pin n. | Function |
| Molex 51021-1400 | 1 | GND |
| | 2 | Backlight Dimming Analog 0 ~ 3.3 V Digital PWM |
| | 3 | GND |
| | 4 | ON (3.3 V) - OFF (0 V) |
| | 5 | GND |
| | 6 | GND |
| | 7 | GND |
| | 8 | GND |
| | 9 | GND |
| | 10 | 12-24 VDC |
| | 11 | 12-24 VDC |
| | 12 | 12-24 VDC |
| | 13 | 12-24 VDC |
| | 14 | 12-24 VDC |

| J10 | | |
|----------------------|--------|-----------|
| Alternative DC Input | | |
| Mate with | Pin n. | Function |
| Molex 50-37-5043 | 1 | 12-24 VDC |
| | 2 | 12-24 VDC |
| | 3 | GND |
| | 4 | GND |



| J11 | | |
|------------------|--------|-----------|
| DC input | | |
| Mate with | Pin n. | Function |
| Molex 43025-0400 | 1 | GND |
| | 2 | GND |
| | 3 | 12-24 VDC |
| | 4 | 12-24 VDC |

| J15 | | |
|---------------------------|--------|------------------|
| Backlight V/A measurement | | |
| Mate with | Pin n. | Function |
| Molex 43025-1000 | 1 | 12-24 VDC Load |
| | 2 | 12-24 VDC Load |
| | 3 | 12-24 VDC Load |
| | 4 | 12-24 VDC Load |
| | 5 | 12-24 VDC Load |
| | 6 | 12-24 VDC Source |
| | 7 | 12-24 VDC Source |
| | 8 | 12-24 VDC Source |
| | 9 | 12-24 VDC Source |
| | 10 | 12-24 VDC Source |

| J8 | | |
|------------------|--------|-------------|
| OSD Key Control | | |
| Mate with | Pin n. | Function |
| Molex 51021-1200 | 1 | SOURCE |
| | 2 | RESINC |
| | 3 | PLUS |
| | 4 | MINUS |
| | 5 | DOWN |
| | 6 | UP |
| | 7 | MENU |
| | 8 | STAND-BY |
| | 9 | 5/3.3 V |
| | 10 | LED |
| | 11 | IR RECEIVER |
| | 12 | GND |

| J6 | | |
|-------------------|--------|-------------------------|
| Front Panel Board | | |
| Mate with | Pin n. | Function |
| Molex 51021-0600 | 1 | 3.3 VDC OUT (100 mA) |
| | 2 | LED |
| | 3 | IR RECEIVER |
| | 4 | GND |
| | 5 | GND |
| | 6 | LIGHT SENSOR |

| J4 | | |
|------------------|--------|------------------|
| Serial Com | | |
| Mate with | Pin n. | Function |
| Molex 51021-0400 | 1 | RX (RS232 Level) |
| | 2 | TX (RS232 Level) |
| | 3 | GND |
| | 4 | GND |

| J2 | | |
|-----------------------------|--------|------------------|
| Output to Panel Data (LVDS) | | |
| Mate with | Pin n. | Function |
| Hirose DF19-30S-1C | 1 | GND |
| | 2 | TXE3+ |
| | 3 | TXE3- |
| | 4 | TXECLK+ |
| | 5 | TXECLK- |
| | 6 | TXE2+ |
| | 7 | TXE2- |
| | 8 | TXE1+ |
| | 9 | TXE1- |
| | 10 | TXE0+ |
| | 11 | TXE0- |
| | 12 | GND |
| | 13 | GND |
| | 14 | LCD Power Supply |
| | 15 | LCD Power Supply |
| | 16 | LCD Power Supply |
| | 17 | LCD Power Supply |
| | 18 | LCD Power Supply |
| | 19 | GND |
| | 20 | TXO3+ |
| | 21 | TXO3- |
| | 22 | TXOCLK+ |
| | 23 | TXOCLK- |
| | 24 | TXO2+ |
| | 25 | TXO2- |
| | 26 | TXO1+ |
| | 27 | TXO1- |
| | 28 | TXO0+ |
| | 29 | TXO0- |
| | 30 | GND |



| | | |
|-------------------|----------------------------------|---------------|
| DATA | 02/10/2017 | |
| DESCRIZIONE | VIN6038-NYCTA Quick reference | |
| | NOME | DATA |
| DISIGNATO | E. de Paula | 02/10/2017 |
| CONTROLLATO | A. Galli | 02/10/2017 |
| APPR. MECC. | E. de Paula | 02/10/2017 |
| Q.A. | | |
| DISIGNO N° | SCALA 1:1 | UNITA': |
| SOSTITUISCE IL N° | COPIA A: | FOGLIO 1 DI 1 |
| SOSTITUITO DAL N° | N° COPIE | |

A3 P/N VIN6038-DRW15 REV. 0